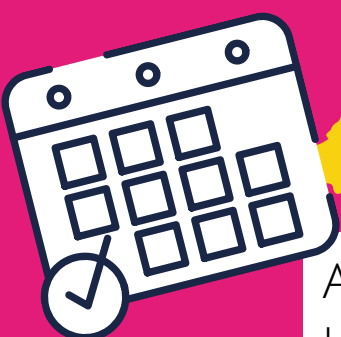


# MOVING IT ON

## RECOMMENDATIONS



### Planning

Allow time to think through what you want to achieve and be open to reimagining parts of your programme and exploring new ideas.

### Technology



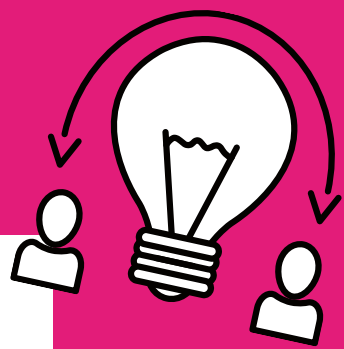
Test functionality, interactivity and safety functions of platforms before using them with young people. Seek support from others with experience in using them.



### School systems

Review school technology and systems pre live sessions. Create a tech check document for the teacher/technician to limit filtering issues, software access and permissions.

### Roles & responsibilities



In live/synchronous sessions, ensure everyone understands their role within the session, perhaps through a planning meeting or by circulating a brief.



### Promotion

Consider new approaches to promotion of your online offer to schools/organisations eg creating separate social media channels with an education/learning focus.



## Testing

Aim to test your approach/content with multiple settings and gather feedback from all involved in order to fully understand the effectiveness and challenges.

## Accessibility



Use an accessibility-first approach. Including it in your plans will make things easier should you need it in future. Many platforms have accessible functions already set up.

## Safeguarding



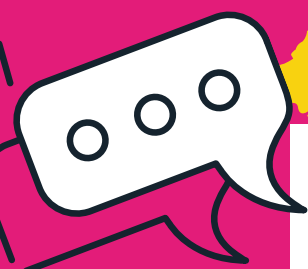
Regularly review safeguarding policies and procedures to ensure that they are fit for purpose and cover all that you intend to do.

## Connectivity



The dependence of a good internet connection will always be a risk of online delivery - but a risk worth taking for the ability to connect directly with the students.

## And finally...



Moving on from a crisis response, capitalise on the benefits that blended learning/digital approaches might offer your learning programmes ongoing eg offering greater access and developing deeper engagement.

 @NNFestivalBridge

 @NNFBridge

 @festivalbridge

 [nnfestival.org.uk/festival-bridge/](http://nnfestival.org.uk/festival-bridge/)

 [bridge@nnfestival.org.uk](mailto:bridge@nnfestival.org.uk)